

NOC GEM & MINERAL SOCIETY NEWS

Vol. 32 No. 6

June 2013

President's Message

by Nancy Bird

Hi

I hope everyone will have fun at our show and that a few of you will get up to the CFMS show in Ventura the week before ours. Boy, everything seems to be happening at the same time.

A few people worked real hard for months to make our show a success, and I want to thank them here: Don & Ofelia Warthen, Don & Loretta Odgen, Alan and Teri Heuer, Richard & Nancy O'Conner, and Armando Perdoza. Also Heather Bates, Janis Logsdon, Caroline Colman, Jay and Kathy Valle, Audrey Woolfolk, Clyeda Tezak, Jann Cohen, Trini Hermiosillo, and Jonas & Valeria Ruzgys all helped out. THANK YOU ALL. It takes so many people to do this and we always seem to pull it off every year-so congratulations one and all!!!!

I have decided to book our holiday dinner at Portofino's again. Sign-ups will start in September.

I still haven't gotten anyone to be in charge of refreshments so unless someone comes forward, we won't have anything but cookies and bring your own coffee or water, etc. starting in September. We will still have a 10-minute break to be able to stretch and mingle.

And at our June meeting, we will not have a business section so that our speaker, Walter Lombardo from Nevada Books & Minerals, can speak longer. We are going to try to do this from now on. We will have the business/board meeting the next week on Tuesday and everyone is welcome.

If I don't see you at the show, have a great summer.
Nancy Bird

NOC Club Activities

Board Meeting - 6 p.m. 3rd Tues. at La Habra Community Center (none in Jul & Aug)

Field Trip - Big Bear June 15-16 (cool)

NOC Show - June 8-9

Summer Picnic - Aug 11

Programs

by Anan Heuer

Our June Speaker is Walter Lombardo with the Nevada Book store in Orange. He has some exciting subjects on gems & minerals.

Refreshments

by Nancy O'Conner and Clyeda Tezak

Thanks to Ofelia Warthen and Nancy O'Connor for bringing the goodies to the meeting. Nancy Bird and Tero Heuer will bring the goodies to the June meeting.

Members in the News

HAPPY BIRTHDAY and have a wonderful day all of you who were born in June.

<i>Rossanna Bates</i>	<i>Roger Loest</i>
<i>Jerry Conley</i>	<i>Ken Marks</i>
<i>Arlene Corcoran</i>	<i>Janet Harvey</i>
<i>Estherl Esparza</i>	<i>William Powers</i>
<i>Harry Howe</i>	<i>Atma Singh Ruhan</i>
<i>Joe Johnson</i>	<i>Clifford Woolfolk</i>
<i>Ruhan Kainth</i>	

Your gemstone is Pearl or Moonstone or Alexandrite or Agate.

Your flower is Rose or Honeysuckle

Shows and Events

May 31-June 2, Ventua, CA
CFMS Show & Convention
Conejo - Oxnard - Ventura Gem & Minera Soc.
Ventura County Fairgrounds
10 W. Harbor Blvd.
Hours: Fri. & Sat. 10-5, Sun. 10-4
Rob Sankovich (805) 494-7734
rmsorca@adelphia.net

June 8-9, 2013, La Habra, CA
North Orange County Gem & Mineral Society
La Habra Community Center
101 W. La Habra Blvd.
Hours: 10 - 5 both days
Loretta Ogden (909) 598-2456
Cell: (909) 217-5864
Email: fbtr1@aol.com
Website: nocgms.com

June 8-9 2013, GLENDORA, CA
Glendora Gems
Goddard Middle School
859 East Sierra Madre
Hours: Sat. 10-5 daily
Bonnie Bidwell (626) 963-4638
Email: Ybidwell2@aol.com

July 13-14, 2013, CULVER CITY, CA
Culver City Rock & Mineral Club
Veterians Memorial Auditorium
4117 Overland Ave (Overland & Culver)
Hours: Sat 10-6; Sun 10-5
Robert Thirlaway (310) 462-2269
Website: <http://www.CulverCityRocks.org>

August 3 & 4 2013, NIPOMO, CA
Orcutt Mineral Society
Nipomo High School
525 North Thompson Ave.
Hours: 10-5 daily
Wes Lingerfelt (805) 929-3788
Website: www.omsinc.org

September 7 - 8, 2013 DOWNEY, CA
Delvers Gem & Mineral Society
Woman's Club of Downey
9813 Paramount Blvd.
Hours: Sat 10-6; Sun 10-4
Jon Fults, (714) 856-7548
jphnfultz@verizon.net

November 2-3 2013, LANCASTER, CA
Palmdale Gem & Mineral Club
Antelope Valley Fairgrounds
2551 West Ave. H & Hwy 14
Hours: 10-5 daily
Email: pgms@antelecom.net
Website: www.palmdalegemandmineral.com

Refreshments

by Nancy O'Connor

Request for a new Refreshment chair or co-chairs as they are not going to do this after the June meeting. So we need someone by September if there are going to be refreshments. I need to give the new person all the stuff in June.



PRINTING

421 S. Cypress St.
La Habra, CA 90631
(562) 697-8207
(562) 687-4501 fax
tnlprinting@roadrunner.com

NOC General Meeting Minutes La Habra Community Center May 14, 2013

by Teri Heuer

Meeting started at 700 p.m. with the flag salute. Alan Heuer Scholarship Committee – Alan handed the students entry letters for our 2013 scholarships Program. This program provides one senior student from La Habra high school and one senior student from Sonora high school with a check for \$750.00. The club members who attended the meeting had a chance to review and to make their selection.

Our club members Jay Valle and Don Ogden presented us with past field trip adventures in the area around Eagle Mountain. Both of these members are filled with vast knowledge of rock hounding. During the presentation Jay shared some great tips on camping, day excursions and of course “where to find the good stuff”. Go to the NOCGM website for upcoming and future field trips.

We also had our newest member Tedy-K Hadisurya, presented slides from a friend of his that showed the Sumatra earthquake as it was happening. Here is some additional information concerning that event. The October 2010 Sumatra earthquake was a magnitude 7.7 Mw earthquake that occurred on 25 October 2010 off the western coast of Sumatra, Indonesia at 21:42 local time (14:42 UTC). The earthquake occurred on the same fault that produced the 2004 Indian Ocean earthquake. It was widely felt across the provinces of Bengkulu and West Sumatra and resulted in a substantial localized tsunami that struck the Mentawai Islands. Tedy is a practicing Geologist. He did geological work in Jakarta, Indonesia from 1987-1995.

Many villages on the islands were affected by the tsunami, which reached a height of 3 m (9 ft.) and swept as far as 600 m (1800 ft.) inland. The tsunami caused widespread destruction that displaced more than 20,000 people and affected about 4,000 households. 435 people were reported to have been killed, with over 100 more still missing. The subsequent relief effort was hampered by bad weather and the remoteness of the islands, which led to delays in the reporting of casualties.

Thank you, Jay, Don and Tedy.

Break for refreshments and sales of raffle tickets.

General Meeting: President Nancy Bird called the meeting to order.

Minutes of the last general meeting were accepted.

Don Warthen Treasurer gave the treasurers report. Refer to report for more information.

Treasures report stands as read. Don also had a sign-up sheet for the Senor Campos chamber event.

Field Trips – Kramer Junction

Federation report by Loretta Ogden - refer to report for more information. She provided us with an update on the upcoming Federation show being held in Ventura. The show dates are May 31 thru June 2

Education committee chair Ofelia Warthen spoke about the upcoming classes. Refer to the education section of our newsletter for dates and future classes.

Upcoming Show meeting will be held on Tuesday May 28, 2013. The meeting will be held at the La Habra Community Center.

Remember every member should participate with some type of donation, something nice for the hourly raffle and anything for the silent auctions.

The raffles and the silent auction are a very exciting part of our show, so please help with your donations. This year it is easy to donate, all you have to do is come over to the community center with your donated items anytime Friday June 7th from 8am until 5pm. Loretta will be accepting all the donations at that time. If you are unable to make it to the community center on Friday, but you have items you would like to donate, please call Teri Heuer 951-640-2923 and she will make arrangements with you to get those items picked up in time for our show.

Note: If you do need items picked up please call Teri as soon as possible so your items can be included. Thank you to our awesome members for all your donations. Your donations will make our 2013 Gem & Mineral show a great success.

Our Red, White and Blue Gem & Mineral show will be held June 8 & 9, 2013 we still have display cases available for the show hallways. This is a great opportunity for our members to display their own collections. Contact Teri Heuer 951-640-2923 if you are interested in setting up a case for the show. We will be setting up the cases all day Friday.

Meeting ends at 9:00 p.m.

**North Orange County Gem & Mineral Society
La Habra Community Center**

Beading Class

Tuesday June 25, 2013

6:00 to 9:00 p.m.

A beaded flag for the 4th of July



\$25 members and \$35 non-members
Finishing & embellishing kits will be
available at the class for an extra fee.

Name _____

e-mail _____

Phone Number _____

Please make checks payable to: NorthOrangeCounty Gem & Mineral Society

Mail to:

Ofelia Warthen

15455 Tetley Street

Hacienda Heights, CA 91745

Ph: 626 (826) 9538

Activity at the Show

Scholarship Presentation

NOC will honor two students with a scholarship at the show on Saturday, June 8 at 5:00 p.m. La Habra Mayor, Rose Espinoza will present the scholarships on Saturday at the show.

The Wall That Heals

NOC named its show this year “RED, WHITE & BLUE”. NOC is a co-sponsor of the 1/2 size Vietnam Veterans Memorial Wall.

Our show theme reflects our pride and sponsorship. The Wall will be displayed at the La Habra High School July 11-14.

There will be patches available for purchase at the show so that you can add the name of your veteran. The patches will be placed on a banner that will travel with the 1/2 size wall. Money collected from the patch sale will go to the American Legion in support of the traveling wall. Patches can be purchased for \$5.00.

ROTC

The ROTC will provide the color guards for the start of the show and provide security for the show.

LECTURES

Saturday 11 to 11:45 am & 12 to 24:45 p.m.

Fossils of San Gabriel Valley by Keith Krzywiec
Sunday 1 to 3 p.m.

Diamond Decture by Don Warthern

Kids Activities

Learn to make toothpaste, and make your favorite pet rock. and other special projects. The La Habra Police will be speaking in the Kids room from 2 to 3 p.m. on Saturday and Sunday. They also will have a Police Cruiser available for the kids to go through.

Education Report

*by Ofelia Warthen
Education Chairperson*

I am very proud of our NOC Club and being involved in our 2013 Red, White, and Blue Gem Show has been very exciting. Our Show Chairperson, Loretta Ogden, has put together a great venue of events. It takes a great effort of all members coming together to make a successful outcome of this type of event.

When Don and I attend Chamber functions, all we hear is good vibes. The La Habra Community looks forward to our annual Gem Show with excitement, especially the kids. Besides many projects, there will be a presentation of our La Habra Police with their Police vehicle for the kids to inspect. What an exciting event for the kids. We will also introduce and sign-up our June 25th class of a beaded flag pendant. All and all, “we can always do it and will scatter some sunshine to others”.

Summer Picnic

NOC will have there summer picknicat the home of Jay and Kathy Valle. It will be potluck and swimming. Kathy will send out invitations to remind all.

Date: Sunday August 11

Time: 3 p.m.

Where: Jay and Kathy Valley’s home

Address: 1421 Latchford Ave.

Hacienda Heights, CA 91745-2642

Phone: (626) 934-9764

Aging

Old age is no place for sissies.” ~ Bette Davis

“Life begins at forty - but so do fallen arches, rheumatism, faulty eyesight and the tendency to tell a story to the same person three or four times.” ~ Helen Rowland

“No man is ever old enough to know better.” ~ Holbrook Jackson

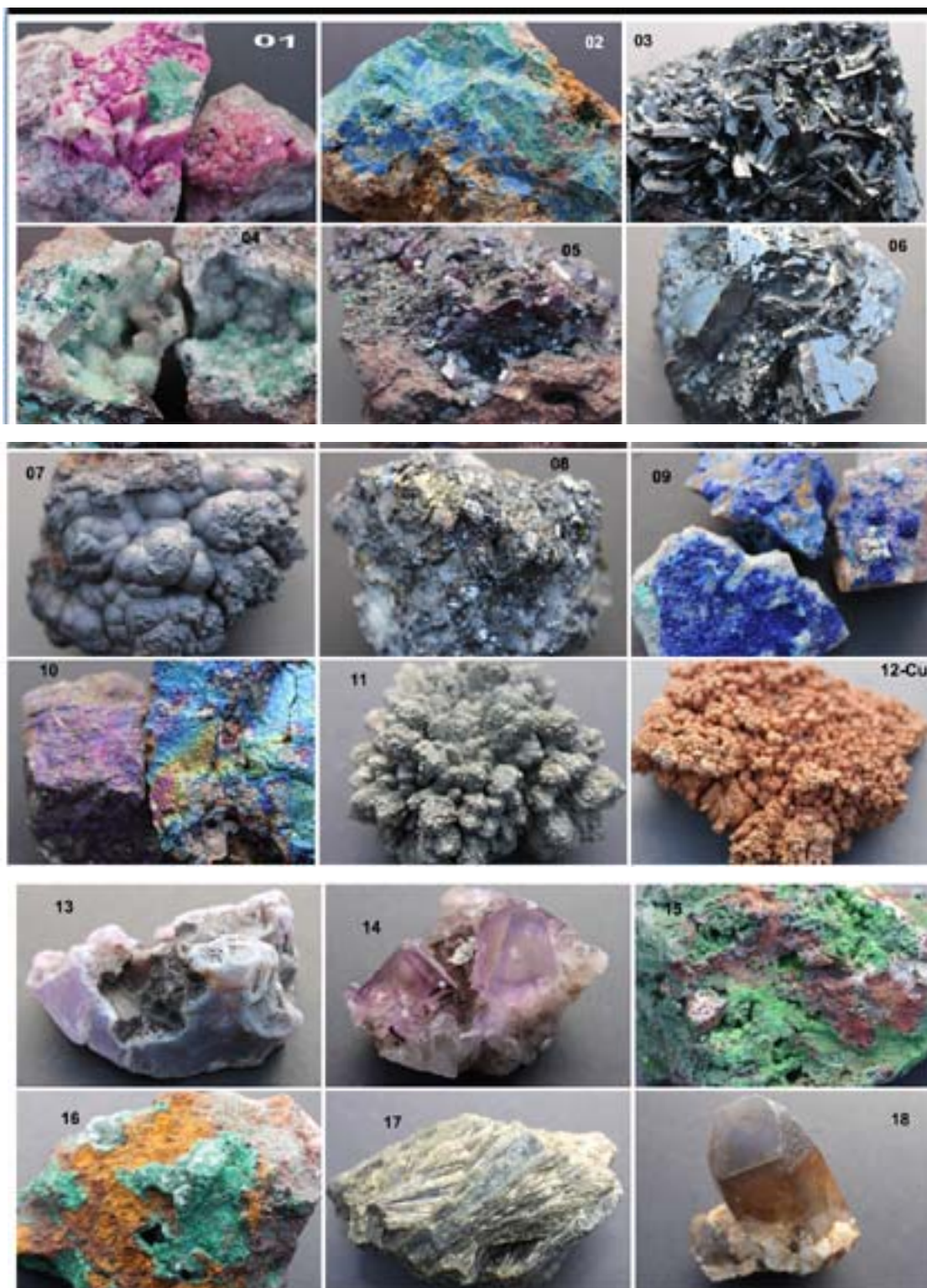
Help Identifying Crystal Specimens

On Fri, 5/31/13, Anthony Ferrari <ferrariaa@yahoo.com> wrote:

I would appreciate some help in identifying some new specimens from the great estate sale at PB, last weekend. Some of these items could be used for educational activities.

The following and many more can be viewed at:

<http://www.flickr.com/photos/9068283@N08/sets/72157633838781116/>





One-Day Field Trip to Big Bear Lake Area

by Jay Valle

Date: June 15, 2013

Time: 9:00 AM

Meeting Place: Big Bear Discovery Center on north side of Big Bear Lake.

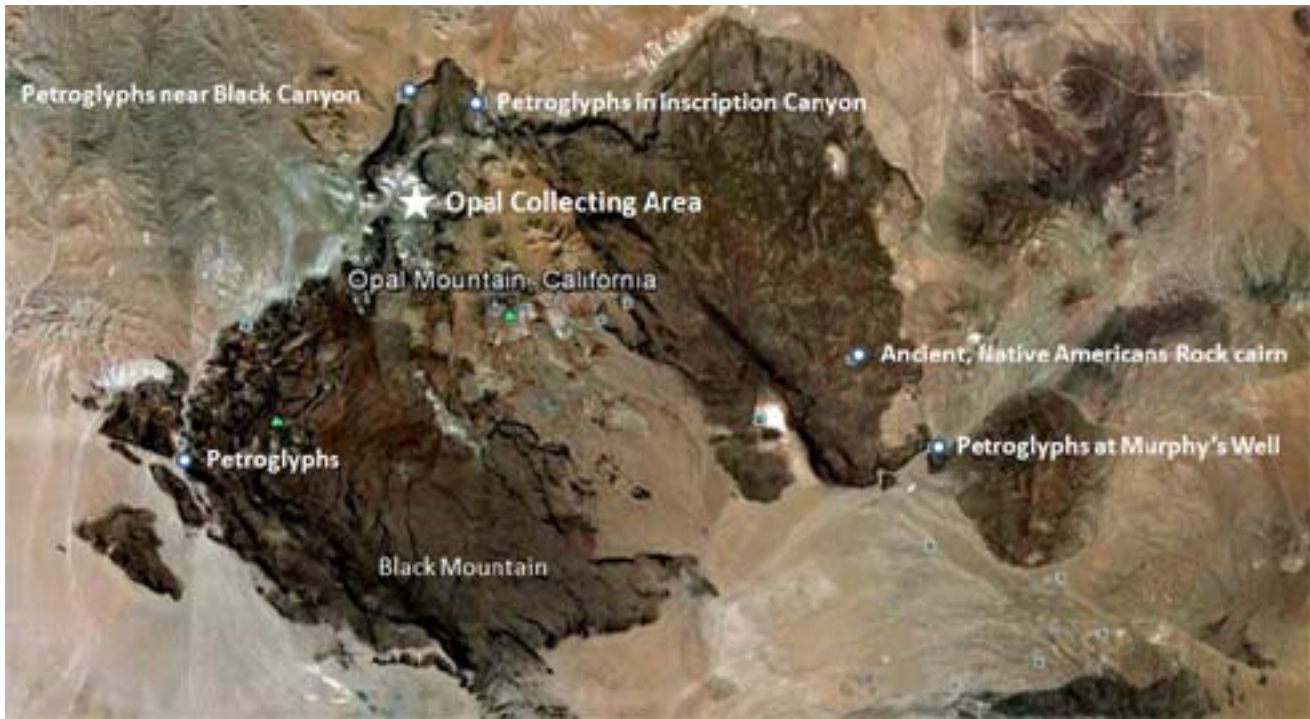
Things to bring: Bring water and lunch, snacks, etc. Cameras are never a bad idea (you never know what you may see and Big Bear is a beautiful area).

Useful Tools: Collecting bag, rock hammer, 1/4" screen, small digging tools

For more information contact Joe Goetz at (626) 914-5030.

Directions: Take the 210 Freeway to Hwy 330 north to Running Springs. Follow Hwy 18 east to Big Bear Dam. Continue on Hwy 38 on the north side of the lake (stay left - do NOT cross the dam). Go through Fawnskin to the Big Bear Discovery Center.





Black/Opal Mountains Field Trip Presentation May 12, 2013
by Jay Valle

Opal mountain is about 125 miles from Whittier. All roads beyond Hinkley are dirt roads . Some roads require 4-wheel drive vehicles.

Around 1914-15, mines in the Scout's Cove area produced precious opal, as well as some beautiful cherry and orange common opal. However, the best seams were about 200 feet below the surface and were locked in extremely hard rock. Ultimately the expense of extracting the opal became too much and the mine closed down.

Recently the BLM bulldozed all vestiges of the mine itself. The good news is that the area is crawling with common opal. In many cases you can simply pick up chips from earlier rockhounds. The best specimens are gotten by extracting them from the seams with chisels and hammers.

Materials to collect.

Common opal – honey, green, orange, red, yellow, and white.

Red and yellow jasper, Chalcedony, Jasper, Thomsonite nodules, agate, and Soap bubble agate

Indian Petroglyphs

Petroglyphs are located in Inscription Canyon, Murphy Wells, and along Black Canyon road.

BLM campground

Rainbow Basin – Owl Canyon



American Opal Co. Dugout - 1915



2013



Orange & Some Amber Opals



Cherry Opal



Checking Out Inverted Thunderbird



**Seeking The Not-So-Illusive
Amber-Opal**



Thunderbird from Space via Google



Petroglyphs In Inscription Canyon



Ancient Native American Rock Cairn
A cairn is a man-made pile or stack of rocks for landmarks or religious reasons