

NOC GEM & MINERAL SOCIETY NEWS

Vol. 30 No, 6

June 2011

President's Message

by Dave Swanston, President

Our ANNUAL GEM & MINERAL SHOW is about to begin. The Officers and Committee Members have worked very hard to make this a great show. The set up for our show is this Friday beginning at 8:00 a.m. at the Community Center. We will have coffee and donuts for an eye opener. We definitely can use a little more help with the set up; so if you can find the time we could sure use you help. If you would like, you may wish to help in whatever area of the show on Saturday and Sunday you feel comfortable with. The more involvement we have, the stronger our club will become.

This year we have a record number of 18 dealers all interested in making this a great show. So, be sure to tell your family, neighbors, and friends to come and enjoy our free show — they will thank you.

Our preshow open house will be Friday from 5 to 7 p.m. Members from the La Habra City Council and the Chamber of Commerce have been invited. All club members are also invited. Refreshments will be served.

My thanks to Frank Winn and the former La Puente Gem & Mineral Club, for giving us the funds to honor two high school students from Sonora High School with scholarships this Friday afternoon between 5:30 & 6 p.m. at the community center. Dr. Jack Hawkins from Sonora HS and the parents will also be present. Mayor Jim Gomez will be helping us with the presentations along with several Council Members. We wish these students well in all their future endeavors.

Continued on Page 3

NOC Club Activities

Board Meeting - TBD

Field Trip - TBD

Deadline for NOC News - June 17

VIP Night at show - June 3, 5 p.m.

NOC Show - June 4 -5.

Programs

by Don Eschbach

June 14 - Field trips to Burro Creek, Calico Area, and Gold Rock Ranch by Don Eschbach, Jay Valle, and Don Ogden

Refreshments

*by Nancy O'Conner and
Clyeda Tezak*

Thanks to Kim Winn and Nancy Bird for bringing the goodies to the May meeting. Loretta Ogden and Yolanda Schirer will bring the goodies to the June meeting.

Members in the News

HAPPY BIRTHDAY and have a wonderful day all of you who were born in June.

<i>Rossanna Bates</i>	<i>Roger Loest</i>
<i>Jerry Conley</i>	<i>Ken Marks</i>
<i>Janet Harvey</i>	<i>William Powers</i>
<i>Harry Howe</i>	<i>Atma Singh Ruhan</i>
<i>Joe Johnson</i>	<i>Clifford Woolfolk</i>
<i>Ruhan Kainth</i>	

Your gemstone is Pearl or Moonstone or Alexandrite or Agate.

Your flower is Rose or Honeysuckle

Shows and Events

June 4-5, 2011, La Habra, CA

North Orange County Gem & Mineral Society
La Habra Community Center
101 W. La Habra Blvd.
Hours: 10 - 5 both days
Dave Swanston (626) 912-1531
Email: swanni3@roadrunner.com
Website: nocgms.com

June 4-5 - GLENDORA, CA

Glendora Gems
Goddard Middle School
859 East Sierra Madre
Hours: Sat. 10-5; Sun. 10-4
Bonnie Bidwell (626) 963-4638
Email: Ybidwell2@aol.com

June 3-5 - WOODLAND HILLS, CA

Rockatomics Gem and Mineral Society
Pierce College
20800 Victory Blvd
Hours: 9-5 daily
Gary Levitt (818) 993-3802, (cell) (818) 321-6290
Email: Show@Rockatomics.org
Website: www.Rockatomics.org

July 9-10 - CULVER CITY, CA

Culver City Rock & Mineral Club
Veterians Memorial Auditorium
4117 Overland Ave (Overland & Culver)
Hours: Sat 10-6; Sun 10-5
Robert Thirlaway
Website: <http://www.CulverCityRocks.org>

August 5-7, NIPOMO, CA

Orcutt Mineral Society
St. Joseph's Church Recreation Hall
298 S. Thompson Ave.
Hours: 10-5 daily
Gloria Dana (805)929-6429
Email: info@onsinc.org
Website: www.omsinc.org

September 10-11 - DOWNEY, CA

Delvers Gem & Mineral Society
Woman's Club of Downey
9813 Paramount Blvd.
Hours: Sat 10-6; Sun 10-4
Guynell Miller (562) 633-0614

October 8-9 - TRONA, CA

Searles Lake Gem & Mineral Society
13337 Main Street
Hours: Sat; 7:30-5; Sun. 7:30-4
Jim & Bonnie Fairchild (760) 372-5356
Email: slgms@iwvisp.com
Website: www1.iwvisp.com/tronagemclub

October 15-16 - WHITTIER, CA

Whittier Gem & Mineral Society
Whittier Community Center
7630 Washington
Hours: 10-5 Daily
Marcia Goetz (626) 260-7239
Email: joemar1@verizon.net

November 5-6 - LANCASTER, CA

Palmdale Gem & Mineral Club
Antelope Valley Fairgrounds
2551 West Ave. H & Hwy 14
Hours: 9-5 daily
Cheri George, (562) 243-8470
Email: lizardwoman3@yahoo.com
Website: www.palmdalegemandmineral.com



President's Message (Cont.)

Still could use a few more items for our Show silent auction.

We will have a show wrap up meeting on Tuesday June 7, at 7:00 p.m. at the Community Center. Would like all Show Committees and Board Members present.

Our next general meeting will be the week following which is Tuesday June 14, 7:00 p.m. at the Community Center with a great program put on by a few of our club members.

The Show officially opens to the public at 10 a.m. on Saturday June 4, until 5 p.m. and the same hours again on Sunday June 5.

Hope to see all of you at the SHOW.

Chamber Event at Senor Campos



Show Program

DEALERS

Agate Gallery – Dave Hignett
Amargosa Gem & Minerals – Russell Belevick
AmeriAsian Business Corp. – Yini Hau
Andy DeLong Trader – Andy DeLong
Aragon Enterprises – Mariano & Beatriz Aragon
Ariana Gems & Minerals
Cam's Crystal Gallery – Cameron Lawder
City Graphics – Henry (Mike) Woodward
Crystal Monster – Miao Yang
Dragon Minerals – Steve Hardinger
Gems by Hill – Shirley Hill
John Garsow Gems & Minerals – John Garsow
Johnson Brothers – Yogesh Shah
McCullough Fossils – Lynette McCullough
Nevada Mineral & Book Co. – Walt Lombardo
Never Enough Karats – Sharon Szymanski
Norscott Gems – Albert Dolvick
Todd Schowalter Fossils Plus – Todd Schowalter

DEMONSTRATORS

Carving – Audry Woolfork
Earthquake Power Point Presentation – Don Ogden
Faceting – Jonas Ruzgys
Geode Cutting – Pat Mogan
Jewelry – Loretta Ogden
Lapidary – Jay Valle
Silversmithing – Don Eschbach

ACTIVITIES AT THE SHOW

Cutting Geodes
Grab Bags – Grab bags containing rough and polished stones
Kids Room – Rock identification, toothpaste making, and more.
Plants – Beautiful and exotic
Silent Auction – Beautiful slabs etc. You set the price.
Spinning Wheel – Spin the wheel and win a prize.

General Meeting May 10, 2011

by Nancy Bird

The meeting was called to order by President Dave Swanston at 7:00 p.m. Don Eschbach led the salute to the Flag. Twenty-six members present.

Don Eschbach introduced our guest speaker Janie Duncan. She gave a great lecture on Beads from Around the World, and a video entitled "World On A String". During the break, members were able to purchase her work.

The meeting was called back to order. Frank Winn motioned to accept the minutes of the April meeting as published in the newsletter. Don Eschbach 2nd the motion. The minutes were approved.

Committee Reports-

1. **Programs**-Don Eschbach said the June meeting program will be presented by Jay Valle, Don Ogden, and Don Eschbach on field trips.

2. **Refreshments**-Clyeda Tezak thanked Nancy Bird and Kim Winn for tonight's refreshments. Loretta Ogden and Yolanda Schirer and will bring the June refreshments.

3. **Show**. Everyone has been working very hard.

Publicity - Don Eschbach, has gotten our show mentioned in

Life in La Habra,
Lapidary Journal,
Rock & Gem Magazine,
La Habra Journal,
Westways,
Hacienda Heights Highlander,
The Orange County Register.
Will send in May to OC Register,
Whittier Daily News,
San Gabriel Valley Tribune,
NOC Facebook,
NOC website,
Street banner, and street signs.
CFMS newsletter.

Nancy Bird will do L. A. Rocks.

Don Eschbach and Fran Swanston produced the show posters and flyers.

Don & Kathy Eschbach have sent letters to local leaders.

Demonstrators - Don E. has lined up the demonstrators and changed the dates on the banner.

Warehouse-Frank Winn, Jay Valle, and Don Ogden. Frank will be in charge of the truck.

Grab Bags (new this year) - Fran S. Nancy will sell the new and remainder from last year.

Plants - Nancy Bird again this year.

Raffle - Kathy Eschbach

Tickets - Designed by Don Ogden. and distributed by Loretta Ogden.

Kid's Room - Ofelia Warthen, Barbara Woolfolk, Clyeda, Frank W., Mary Ellen, and Audrey Woolfolk.

Programs - Don Ogden. and Dave Swanston.

Electrical - Frank Winn

Security - Don Ogden ** Need more.

4. **Scholarship**. Frank Winn explained that the La Puente club disbanded and merged with us and brought their money to be used only for scholarships. A motion to award scholarships to local schools was approved by the membership by 17 to 4 vote.

They will be awarded at the Friday night open house of the show. The presentation will be assisted by Mayor Jim Gomez, with parents and teachers in attendance, followed by refreshments.

5. **Social Secretary**. Nancy Bird reported those who are sick, or recovered. Chalmer Steed is in hospice, and Bob Cordero is now home.

6. **Field Trips**. One day to Mule Canyon on 5/28.

7. **Federation Report**. Loretta will not be going to the CFMS show and meeting in Anderson.

8. **ROTC**. John Erskine will be the contact.

9. Treasurer's report - None.

Old business-

Membership cards and dues discussed by Dave Swanston.

```
  \\\|//|
  ||--//
  (@ @)
--oOo--( )--oOo--
```

When I was a little kid, I enjoyed making ugly faces at the mirror.

Lately, I have noticed that the mirror is starting to get revenge.

Be Prepared for the Scouts

Volcano Map

Label the picture with these items:

Ash cloud - the cloud of ash that forms in the air after some volcanic eruptions.

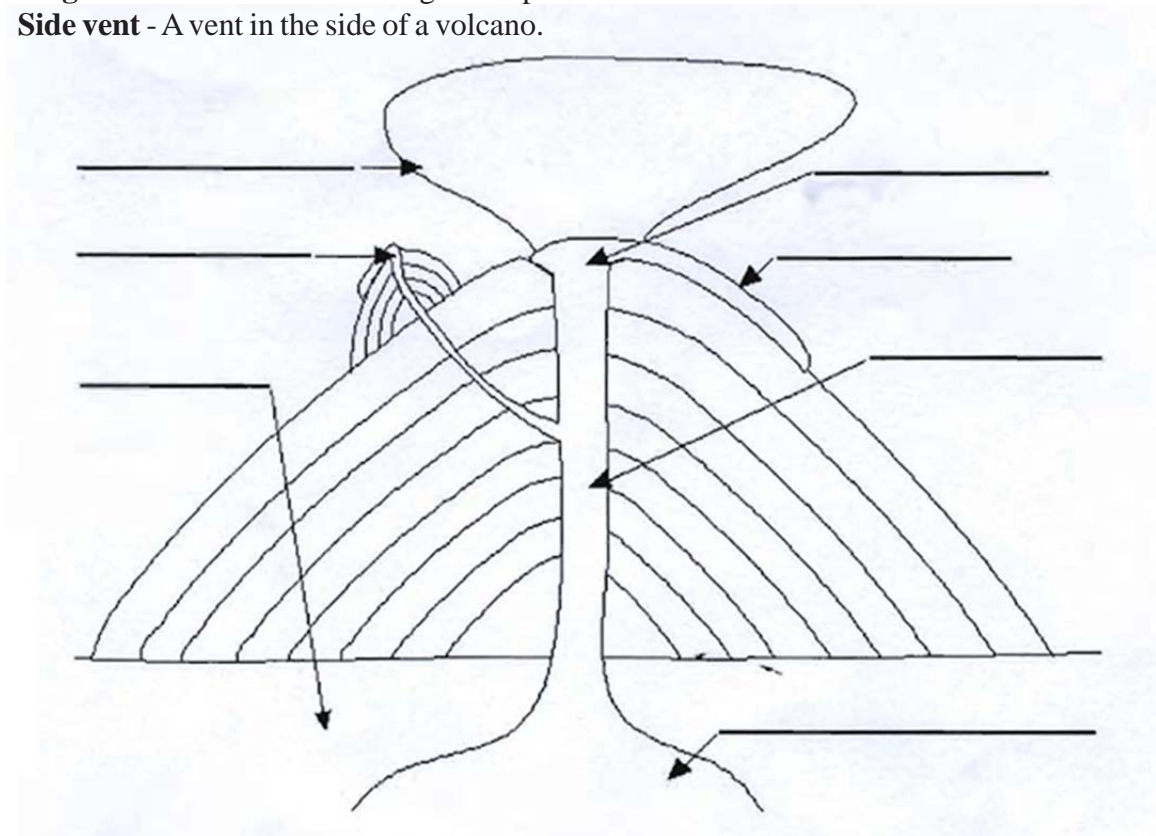
Conduit - A passage through which magma (molten rock) flows in a volcano.

Crust - The Earth's outermost, rocky layer.

Lava - Molten rock; usually comes out of erupting volcanoes.

Magma chamber - Contains magma deep within the Earth's crust.

Side vent - A vent in the side of a volcano.



Word Scramble

Unscramble the letters to spell words used by a Geologist.

LOS FIS _____

OATM NUI _____

AQET EUKRAH _____

YES REG _____

LEONOVAC _____

FIERMAGNI _____

TAEFSY --- SSLGAES _____

EHILCS _____

M RAMHE _____

CAMETHMORPI _____

YSEDMAENTIR _____

ONGIESU _____

Scout-O-Rama Near Irvine Lake

NOC Frank Winn helping Webelo Scouts complete requirements to earn the Geology Belt Loop.





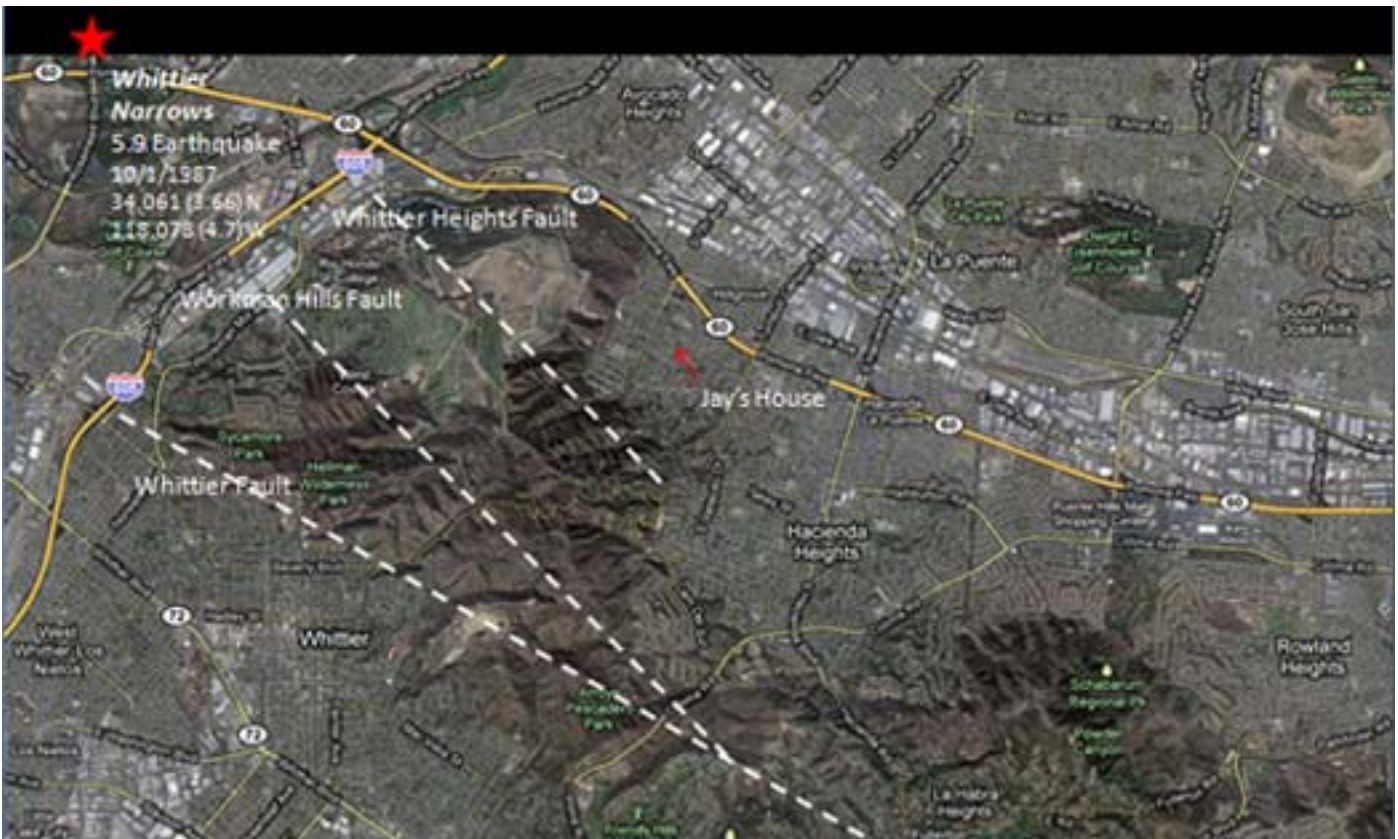
Whittier and Chino Faults

by Don Ogden

The Whittier and Chino Faults are the two upper branches of the Elsinore Fault zone, which is part of the trilateral split of the San Andreas Fault system.




Whittier Fault splits and ends.



Field Trip to Mule Canyon - 5/28/2001

by Don Ogden





Saturday, June 4 & Sunday, June 5, 2011 

Time: 10:00 am — 5:00 pm

Jubilee of Gems Show



- Checkout our many Dealers with beautiful stones and jewelry.
- See our Demonstrations and Displays including rocks, crystals, and fossils.
- Participate at our Spinning Wheel
- Visit the Children's Activities.
- Enjoy good food, and hourly Raffle drawings.

 We will have Demonstrations in:
Wire Wrapping, Lapidary, Faceting,
 Carving, Silversmithing, and
Geode Cutting.

**North Orange County Gem &
Mineral Society, Inc.
Presents:**

**Jubilee Of Gems Show
"Rocks For All Ages"**

**La Habra Community Center
101 W. La Habra Blvd.
La Habra, CA 90631**

Located at the corner of Euclid and
La Habra Blvd.

Free Admission & Free Parking



Show Chairman, Dave Swanston
Phone: 626-912-1531
E-Mail: swanni3@roadrunner.com